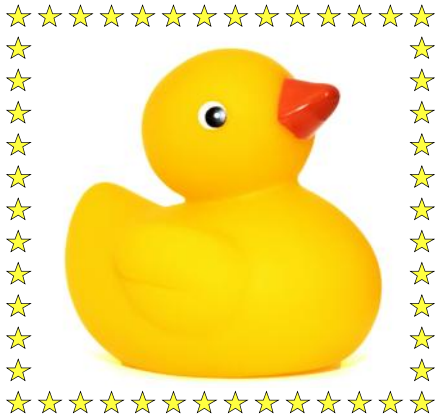


# The Valley Diary

Binderton ~ Charlton ~ Chilgrove ~ East Dean ~ Singleton ~ West Dean

thevalleydiary.org ~ May 2026 Edition



## SINGLETON CRICKET CLUB'S DUCK RACE!

Singleton Cricket Club is gearing up for one of the village's most loved family traditions - the Annual Duck Race, taking place on Bank Holiday Monday 4th May.

The grounds **open from 10.30am** and families can expect a full morning of children's games, activities and plenty of space to enjoy the sunshine. The club's ever-popular BBQ and Bar will be running throughout the morning, alongside tea, coffee and homemade cakes served from the pavilion. **The race will start at 12.30pm.**

With over **1,000 ducks this year and £1000 in prizes** it promises to be the biggest race yet. This year's prize table is the strongest yet, with something for everyone, including: Two Richmond Enclosure tickets for Glorious Goodwood, One night stay in Woodstock Suites B&B, Pub vouchers for The Partridge, The Fox Goes Free and The Star & Garter, Handcrafted pottery by Deborah Harwood, Games Set & Match gift voucher, Cast Iron Coffee and over £400 in cricket-related vouchers.

Whether you're cheering on your duck, enjoying a burger from the BBQ, or catching up with friends over a drink, the Duck Race is a brilliant day out for the whole community - and a vital fundraiser supporting junior cricket at Singleton CC. We look forward to seeing you.

# AI CAMERAS

Sussex Police have deployed new AI cameras across Sussex to improve road safety and save lives through the creation of the Fatal Five Unit and AI technology.

With 82 collisions involving drivers using mobile phones and 214 people injured because they weren't wearing a seatbelt in the last year alone, these figures show just how serious and persistent the risks are.

Sussex Police are using innovation to enhance their ability to detect dangerous behaviour, intervene earlier and make better use of officer time across the county.  
*Katy Bourne, Sussex Police & Crime Commissioner*



Mark Astley, MNAEA  
Director

Curious about the **value** of your property?



**JACKSON-STOPS**  
PROPERTY EXPERTS SINCE 1910

To book your free, no obligation market appraisal contact Mark Astley on **01243 786316**.

chichester@jackson-stops.co.uk

jackson-stops.co.uk

# AWARD WINNING LETTING AGENTS SOUTH DOWNS & CHICHESTER HARBOUR PROPERTY

rightmove



erla | propertymark  
PROTECTED



BRITISH  
PROPERTY  
AWARDS

2024 - 2025

★★★★★

GOLD WINNER

LETTING AGENT IN  
EMSWORTH &  
HAYLING ISLAND

At Borland & Borland, Every  
Landlord's an Individual!

- Flexible or Tailor-made Lettings Service
- Fully Managed, Rent Collection, Introduction Only
- Independent, Local, Professional & Knowledgeable



Contact us today for **FREE LETTINGS  
ADVICE!** Call 01243 379000, email  
lettings@borlandandborland.co.uk

**Borland  
& Borland**

Independent Estate Agent

www.borlandandborland.co.uk

50° 50' 40.2" N 0° 56' 14.7" W

6 High Street, Emsworth, Hampshire PO10 7AW

## THE FOX GOES FREE



### WHAT'S GOING ON AT THE FOX?

Our **lovely garden** is now open. Tables are first come, first served. Due to the unpredictable English weather we can't reserve the garden tables, sorry.

Missed out on your **Sunday Roast**? Don't worry as you can now enjoy it daily.

**Fish & Chip Deal Tuesday** is running until 26th May.

Returning soon by popular demand - **Tasty Pizza Menu**.

Follow us on social media or check out our website for upcoming events...

**www.thefoxgoesfree.com**  
**01243811461**

## The Home Buying Experts for West Sussex and Hampshire



Established in 2003 - and with over 35 years' experience, enviable contacts, and in-depth market knowledge - we offer our clients discerning independent advice when acting as their dedicated property buying agent. When it comes to property acquisitions in West Sussex and Hampshire, our expertise and personalised service set us apart.

**pa** Property  
Acquisitions

E: info@propertyacquisitions.co.uk

T: +44 (0)1243 531133

**HOME&DRY**  
GARMENT CARE & HOME SERVICES

**Drowning in Laundry?  
Reclaim Your Weekends  
with Home & Dry!**



**WASH, DRY  
& FOLD**  
Just £3.30 per kg



**GARMENT  
CLEANING &  
DRY CLEANING**  
Coats, Shirts,  
Dry Cleaning & More



**Ideal for everyday clothes, towels,  
bedding, and delicate items.**

**Collection & Delivery Available across the Valley**

Or drop off to our store in Chichester:

Unit 1, St James Works, Chichester PO19 7NN

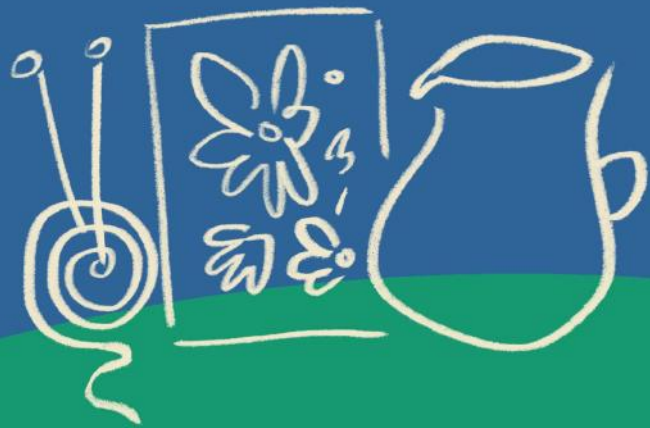
01243 543877 info@homeanddry.biz www.homeanddry.biz

SPRING BANK HOLIDAY WEEKEND  
23<sup>RD</sup> - 25<sup>TH</sup> MAY

# EAST DEAN ART FAIR

Showcasing a wide range of arts and  
crafts by artists from and around the  
South Downs National Park

**PAINTINGS  
CERAMICS  
CRAFTS  
AND MORE!**



**FREE  
ADMISSION**

East Dean  
Village Hall  
P018 0JG



RUN BY FRIENDS OF SINGLETON SCHOOL PTA AND  
 SUPPORTED BY SINGLETON PARISH COUNCIL

# SINGLEFEST

JOIN US FOR LOTS OF FAMILY FUN  
 IN THE COMMUNITY!

SINGLETON C OF E PRIMARY SCHOOL

**SATURDAY, JUNE 13**    12:00 TILL 3PM

**EVENT HIGHLIGHTS**

FOOD STALLS - LIVE BAND - CHILDREN'S  
 ACTIVITIES - CHILDREN'S SPORTS -  
 BOUNCY CASTLES - DRINKS STALL -  
 TRACTOR ON DISPLAY - RAFFLE

CASH ON ENTRY PREFERRED

# Save the Date!

## SINGLETON Village Fete 2026

**Saturday 8th August**  
 1pm - 4:30pm

A fantastic afternoon of family fun, right here in Singleton  
 at the Cricket Pitch.

- ARENA DISPLAYS
- LOCAL STALLS
- RAFFLE & TOMBOLA
- BBQ & REFRESHMENTS
- DOG SHOW
- CAR SHOW
- LIVE MUSIC
- PLANT STALL
- PONY RIDES
- CHILDREN'S RACES/GAMES

& MUCH MORE!

Scan to find out more!

[singletonfete.co.uk](http://singletonfete.co.uk)

In aid of local causes • £1 entry • All welcome

\*\*\* More details coming soon!

## PESTFORCE

PEST & ENVIRONMENTAL CONTROL SERVICES

For a professional, reliable and experienced service  
 please call Lance on 07799695603 or 01243 624525  
 Residential, Commercial and Agricultural  
 Locally based

**LOOK! THIS SPACE  
 COULD BE YOURS:  
 And in Full Colour  
 too!**

For only £210 a year  
 (that's £17.50 per month)!

**Don't Dilly-Dally,  
 Dial David!**

**01243 774385**  
**07973 820877**

## West's Wood Fair 19th, 20th & 21st June 2026

This year will be our 10th wood fair. Pete held the first wood fair in 2009 as a way to celebrate his family working with wood for 200 years. He never planned on holding another one but over the following years people kept asking when he was going to do another one.



So, in 2014 the wood fair reappeared and became a bi-annual event. Sadly in 2020 it was cancelled due to Covid but eventually happened in August 2021. Pete had been toying with the idea of making the wood fair an annual event and decided now was the right time, so ever since the wood fair has happened every year (in June like it had been previously).

This year, many of our regular features will reappear again, like the Dorset Axemen, Pole Climbing demonstrations, the Chainsaw Carving Competition and the Sussex Scrumpy Stakes! We'll also have our Chainsaw Race but with a slight twist this time - the competition has previously only been entered by men, so this year for the first time we are holding a ladies-only competition on the Saturday and a mens-only competition on the Sunday. The competition has also become free to enter. If you are interested in entering head to our website for further information.

The wood fair takes a tremendous amount of time and energy to put together and you'll be surprised to know we are already making plans for *next* year! For a couple of years we have only had the use of half of the field due to crop rotation, but next year we have the whole field back and are very excited to announce that the UK Loggers Championship will be held at the wood fair! Keep an eye out in this year's programme for more information. [westswoodfair.co.uk](http://westswoodfair.co.uk)

## Explore the Hidden Gardens of Cocking

Saturday 20th June 2026  
11am – 5pm

Visit our many village gardens (some new this year) including the renowned Philip Jackson Sculpture Garden.

Teas, refreshments, art exhibition, flower display, plants and books. A great day out to see this lovely South Downs Village and its 11th century church.

Do visit to help celebrate the village spaces that quietly hold their shared stories. Walk at your own pace, meet neighbours and enjoy corners of Cocking not usually open to the public.

Your booking supports the Blue Bell Community Hub's work and its upkeep of the Blue Bell Pub as a welcoming, historic meeting place for social, cultural and educational events.

**Tickets £10 (children under 12 free) online or on the day.**

**Free parking.**

**Booking: [tinyurl.com/27tf7b4a](https://tinyurl.com/27tf7b4a)**

## TALK WITH SUPPER FOR LOCAL CHARITY

*The Blue Bell Community Hub*

## Phillip Jackson

(world famous sculptor)

**Cocking Church**

**Wednesday 27th May  
6pm**

£60 per head

[cockingvillage.events@gmail.com](mailto:cockingvillage.events@gmail.com)

## 100 CLUB

1st... Richard Pailthorpe, Charlton  
2nd... Barry Phillips, Chilgrove  
3rd... Sue Farman, Charlton

What a glorious morning Easter Day dawned to be - the sun shone, the church was beautifully decorated and was full to capacity. Following the service, the draw was made for the April winners and these three shared winnings of £110. Congratulations to all.

The next draw is on Sunday 4th May at East Dean Church. Thanks to all who continue to support this fund-raising venture for the fabric funds of our three historic churches. **Wendy (01243 811608)**



## How would you like to live?

Cabins | Treehouses | Studios

## Random Hare living spaces

Charlton, Chichester

t 07974 097753

w [randomhare.co.uk](http://randomhare.co.uk)

Discover more:



# LOLLIPOP

A TREAT TO PRINT

Brighton | Crawley | Chichester | Southampton

Everything your business needs to stand out.

- Business cards, flyers & brochures
- Posters, PVC banners & outdoor signage
- Shop signage, window vinyls & wall graphics
- Hoarding boards, site signage & plan printing
- Large-format prints & exhibition displays



lollipopprint.co.uk | chichester@lprint.co.uk | 01243 782299  
5 Phoenix Business Centre, Spur Road, Quarry Lane, Chichester, PO19 8PN



## SUNDAY CARVERY at The Griffin

COWDRAY PARK GOLF CLUB

*Try our fabulous Sunday Lunch menu created from seasonal local produce.*



Served between 12 and 3pm  
every Sunday throughout the winter months  
Please call 01730 813599 to book your table.



THE MARTIN SEWELL  
BUILDING COMPANY

Your vision,  
our expertise.  
Building your dream  
home, together

An Award Winning,  
Chartered Building Company



### ABOUT US

Having worked in the Sussex area since 1985, our dedicated & highly skilled team are passionate about delivering outstanding results & creating dream homes for our Clients.

MSBC has built a reputation based on an ethos of openness, strong communication and honesty.

### WHY CHOOSE US?

Experienced in delivering a wide range of high quality building projects, from bespoke new builds to the sensitive renovation of listed buildings or extensions and refurbishments for private & commercial premises.

### CONTACT

01243 542 056  
www.msbc.uk.com  
admin@msbc.uk.com

### AWARDS



INVESTORS IN PEOPLE®  
We invest in people Gold



## CHOKING CHALK

The women of the Singleton and East Dean WI met on the 16th April in Singleton Village Hall for a brilliant talk on the River Lavant.

Kate Whitton from the West Sussex Rivers Trust spoke at length about the chalk stream on our doorstep. With the source of the Lavant in East Dean and the final journey of the river into the mouth of the sea, the Lavant is one of only 200 chalk streams left in the UK. There are only 300 chalk streams in the world, meaning over 65% are in England, so a real privilege to live with one flowing through our beautiful valley.

The river should be a haven for flora and fauna, but as the river progresses and sewage is washed and pumped into the water, Kate highlighted the relevance of acting now to protect the future of the river's health, including the wildlife which inhabits the river.

Our next meeting is on **21st May** in **East Dean Village Hall**. Our speaker, **Sheila Willis**, will be talking on **Handbags to Handcuffs**. I will be keen to update you on the subject matter post meeting!

We have just renewed our memberships for the upcoming year, and if you would like to come and join the oldest WI in England, please do drop me a line.

A brilliant sisterhood who meet once a month, amazing company, always cake and of course, great speakers. **Zoe Mann** zk.mann@icloud.com

A LIVELY CELTIC MUSIC NIGHT

### The Shamrock Irregulars!

Last Thursday of Every Month at The Star & Garter from 8pm  
Fun-filled tunes and great vibes!

**Singleton Community Cafe**

**SPECIAL Event!**

Everyone welcome!

**MONDAY 11TH MAY**

**2PM - 4PM**

**SINGLETON VILLAGE HALL**

**FREE ENTRY**

**REFRESHMENTS AVAILABLE**

including home made cakes!

**LODGE HILL FARM PLANTS**

They will have a stand showcasing some of their wonderful plants!

Good company, great conversations, and a warm welcome!

RELAX ♥ MEET FRIENDS ♥ ENJOY TEA & CAKE ♥ SUPPORT LOCAL

Weald & Downland Living Museum

**On Your Doorstep Days**  
**Sat 2nd - Mon 4th May**  
**10am - 5pm, £5**  
[tinyurl.com/2957wgth](http://tinyurl.com/2957wgth)

**Cream Teas and Orchid Walk on Heyshott**  
**Escarpment Nature Reserve**

**Sunday 7th June**  
**Cobden Hall, Heyshott**  
**3pm to 5pm**

## Francis Ward

Plumbing & Heating Engineer

Qualified, Registered and fully insured in

Oil boiler servicing & maintenance  
Oil tank installation  
Heating system design and install  
Swimming pool oil boilers

Solar heating systems  
Servicing  
Maintenance

Gas boilers  
Cookers  
Swimming pool gas boilers  
New installations servicing and maintenance

All aspects of heating and plumbing covered  
Electrical works undertaken by fully qualified Part P registered engineers  
Commercial & Domestic Spas and Swimming Pools service & repairs

**Bletchley Spas & Pools: Brightside, Singleton, West Sussex, PO18 0EX**

**Phone: 01243 811960**

**Mobile: 07941 039378**



## Singleton and Charlton Parish Council

Please note a change of date for the Singleton and Charlton Parish Council Annual Parish Council Meeting and the Annual Parish Meeting.

This will now take place on **Wednesday 3rd June** at the **Singleton Cricket Club**. Come along from **6.30pm** for drinks and nibbles, and share how you would like to see your Parish Council supporting the local community and what projects you would like to see prioritised.

The meeting will start at **7pm**. All are welcome and the guest speaker will be Clare de Bathe from the Weald and Downland Museum.

The Parish Council is also pleased to support **Singlefest** on **Saturday 13th June**, run by the Friends of Singleton School PTA. Starting at **midday** until **3pm** at **Singleton CofE Primary School**, all are welcome for an afternoon

of family fun for the whole community. Enjoy lots of family-friendly activities, a live band, raffle, food stalls, displays and more. Entry is £2 per person.

See [singletoncharlton-pc.gov.uk](http://singletoncharlton-pc.gov.uk) for further information, or contact the Clerk on [clerk@singletoncharlton-pc.gov.uk](mailto:clerk@singletoncharlton-pc.gov.uk) to find out more about the Parish Council.

## Well Bless My Shoal

### A Poem by Francis

We were brought up on the coast,  
My little brother and me.  
We enjoyed our childhood there,  
With our Mum, right by the sea.

And just across the waves,  
Was an interesting sight.  
Roughly ten miles away,  
We could see the Isle of Wight.

Mum went there a lot,  
To earn a bob or two.  
Being on the ferry most days,  
As a member of the crew.

And when she she got back home,  
We were fed our favourite dish.  
Because each trip, using her rod,  
She caught lots of tasty fish.

She fed us both ever so well,  
Me and my little brother.  
Catching us fish every day,  
She was our 'Ferry Cod Mother'.



## MOLE CATCHING

"NO MOLE, NO FEE"

## WASPS / HORNETS

CONTACT ANGUS ON

**07828 134086**

[WWW.ASCOUNTRYSIDESERVICES.CO.UK](http://WWW.ASCOUNTRYSIDESERVICES.CO.UK)



THE BRITISH MOLE  
CATCHERS REGISTER  
SUPPORTING TRADITIONAL EXPERTISE AND SKILLS

## THIS SPACE COULD BE YOURS!

**Very good rates for this,  
our standard box - other  
sizes available too! Don't  
dilly-dally, give our David  
Mather a call to discuss!**

**01243 774385**

**07973 820877**

## WEST DEAN STORES & TEA ROOM

Fresh local produce to eat in or takeaway

Order when you arrive, or pre-order by phone

Local deliveries available - please contact us for more details

Bread, cakes and sandwiches • Hot and cold drinks • Fruit and vegetables • Milk and eggs

Honey and jams • Newspapers and magazines • Greetings cards • Household essentials

Logs and kindling • Pet foods • Card payments only



## Opening Times

Mon - Fri 08:00-17:00 Sat & Sun 08:00-16:00 Bank Holidays 08:00-16:00

West Dean Stores Ltd, West Dean, Chichester, PO18 0QY Tel: 01243 818222

[stores@westdean.org.uk](mailto:stores@westdean.org.uk) | [www.westdeanstores.co.uk](http://www.westdeanstores.co.uk)

# Farm Diary

**Spring has arrived on the farms and with it a rush to get spring crops planted after the long wet winter, the cattle turned out to pasture and the arrival of new lambs.**

Lambing at Goodwood has gone well, helped by the dry weather for most of April. Following a mild early start to the spring the more recent cold weather has slowed grass growth but now most of the cattle and sheep are out grazing pastures across the estate.

We have just started harvesting our first cuts of grass, clover and lucerne for silage and so begin again to build our stocks of forage for next winter. This will be followed by 2 to 3 more cuts throughout the coming season.

Spring barley crops drilled last month are now well established but along with all other crops are much in need of a good soak.

This month the Goodwood herd of Sussex cows will be calving at Manor Farm, Singleton. As this is a beef suckler herd the calves will remain with their dams throughout the summer and grow rapidly on their rich milk. The Sussex cattle are excellent grazers and perform well on the chalk downland pastures.

As I have mentioned in a previous article, we no longer have a flock of sheep at Droke, so our focus now is on the 240-cow dairy herd and 150 replacement youngstock. All our cattle are out grazing now and enjoying the spring sunshine. **John Holt**

## **Pergola Open Air Theatre 29th June - 11th July, 7.30pm, £10 West Dean Gardens**

Enjoy an enchanting summer evening's theatre with six performances of Shakespeare's everlasting popular masterpiece, A Midsummer Nights Dream, alternating with Ayckbourn's classic comedy, Living Together.

Tickets available on the night. Picnics are welcome.

**[tinyurl.com/25cvzz07](http://tinyurl.com/25cvzz07)**

## **West Dean Parish Council Meeting March 11th, 2026**

West Dean PC welcomed **Natalie Jones-Punch** to the Council as she was co-opted on by unanimous vote. We wish her well for the future. It can only be good thing to have new viewpoints and ideas onboard. Natalie lives in West Dean. **There is still one vacancy** on the Council if anyone is interested in joining.

A member of the public came along and extended thanks to The Edward James Foundation for allowing the **new stretch of the Centurion Way**. Walking conditions here have remained manageable even during the heavy rains and being able to walk in the woodland is so good.

The Council support the new landlord of **The Selsey Arms** and wish them every success with their new endeavours. It is hoped that locals will at least give it a try.

There was a **Litter Picking Day** on 22nd February which was very successful. Fifteen bags of rubbish were cleared. Another date will be published in due course and everyone is welcome.

**Recent Flooding** issues were discussed, especially on the B2141 Binderton to Chilgrove road which had to be closed at times. The ditches along this road require constant digging out to keep water flowing. **Southern Water** tankers have worked consistently to keep overflowing drains from flooding. There is some damage to verges by the river and tracks near the gardens but Southern Water will be contacted about putting this right once the pumping out stops.

Wishing you all a Happy Springtime. Please keep an eye out for the safety of ewes and lambs during this time and remember even picking up one piece of litter on your walk helps keep our village beautiful.

## **Murray Downland Trust Garden Event**

**Saturday 9th May  
11am - 4pm**

Hosted by world-renowned sculptor Philip Jackson at Caster's Brook, Cocking.

**[tinyurl.com/227u9d2k](http://tinyurl.com/227u9d2k)**



*Having trouble  
with your tech?  
Ed can help!*



- Computer Repair, Maintenance & Upgrade
- PC Reinstallation · Equipment Sourcing
- Laptop Screen Replacement · Training
- Virus Removal · Audio / Visual Configuration
- Home network setup & security (wired/wireless)

**01243 216121**

[www.ridea.co.uk](http://www.ridea.co.uk) | [help@ridea.co.uk](mailto:help@ridea.co.uk)



## **Seasoned Firewood**

Cut and split to your requirements

**LAWN MOWING  
HEDGE CUTTING  
GARDEN CLEARANCE**

*Personal service from a local  
family business*

**KEITH GOACHER**

**01243 811746**

**07976 740748**



*We are a small playschool in a beautiful rural location with access to Levin Down.*

Open 8.30am – 3pm

Term Time Only

[www.singleton-playschool.co.uk](http://www.singleton-playschool.co.uk)

[contact@singleton-playschool.co.uk](mailto:contact@singleton-playschool.co.uk)

07519 913406

## **THIS SPACE COULD BE YOURS!**

**Very good rates for this,  
our standard box - other  
sizes available too! Don't  
dilly-dally, give our David  
Mather a call to discuss!**

**01243 774385**

**07973 820877**

The team at Brent Lodge are as busy as ever caring for our patients and fundraising for resources to care for them every day.



We still have dozens of babies in our care requiring round the clock rehabilitation, with more being admitted each day. Please see our website for our Wish List of crucial items if you think you may be able to help. Thank you!

It is a great time of year to let your outside spaces flourish by allowing grasses and flowers to grow more as part of 'No Mow May', which benefits all kinds of insect and wildlife species.

Please remember to check inside garden overgrowth for nesting or hiding wildlife before eventually cutting it all back, however, as this will avoid any casualties. As always, please do call us if ever you come across a wild animal potentially in need and we'll do all we can to help.

For more information and tips, please visit our website or contact us.

**brentlodge.org**  
**01243 641672**

*Lavant Horticultural Society*

## Annual Plant Sale

**Sunday 10th May**  
**Lavant Memorial Hall**  
**2pm until 4pm**  
**Admission free!**

Come and buy from a variety of good quality plants: bedding, vegetables, perennials and shrubs. Also bargains from the Members' stall.  
There will be cream teas!  
Sales are cash only.

### A Cut Above the Rest

A talk about Trees by Tony Kirkham  
**Wednesday 10th June**  
**Lavant Memorial Hall**  
**7.30pm**  
(7pm for Refreshments, Raffle and Sales table.) Non-members welcome at £3.

## This Be the Second Verse!

**Jolly Philip Larkin**

They buck you up, your Mum and Dad  
They may not know it, but they do  
They buy you coffee and they add  
Some chocolate sprinkles, just for you

But they were bucked up in their turn  
By grandmamas in Cashmere coats  
Who half the time said "Work to earn"  
Then bought them toffees, dollies, boats

Man hands on property to man  
It deepens like invested wealth  
Get in, enjoy it all you can  
Don't be a grumpy git yourself!

### LAVANT FRIENDLY CLUB

All ages welcome to join us on the 1st Wednesday of each month. Bit of Bingo, Raffle, Entertainment and more. This Month on **Wednesday 6th May** it's **Tony's Race Game**. Good Fun. Minibus Pick-up all over the place! 2pm - 4pm. 50p.

### CHICHESTER COUNTRY MUSIC CLUB

Concert on the 2nd Friday each month. On **Friday 12th June** at **Lavant Hall** it's M.T. Allan who is **Top Solo** from Derby. Bar etc. £10. 7.30pm - 10.30pm. Live Country Western Music. All Welcome.

**Country & Western Freestyle Dance** on **Saturday 27th June** at **North Mundham Village Hall**. Ridgeway Country Band. 7.30pm - 10.30pm. £12. Soft Drinks, Snacks, Bring your own alcohol. Singles will receive a warm welcome.

**tonybleach@talktalk.net**  
**01243 527439**

### T'Who Gives a Hoot

#### A Poem by Francis

Blowing into his clenched fists,  
He made a loud "Twit Twoo!"  
Then said, "Did you hear that?"  
It's exactly what owls do."

'If you listen carefully," he said,  
'You can hear them call at night.  
Sometimes they are perched,  
Other times in flight."

Does he think I'm an idiot?  
What he said I must dispute!  
Yes, whilst sat on a tree branch,  
The owl does give a hoot.

But Twit Twooing in flight? No!  
Impossible to make that sound.  
Blowing into clenched wing tips,  
He'd come crashing to the ground!

*Chichester District Council*

## UPDATE ON LOCAL GOVERNMENT REORGANISATION IN SUSSEX

**West Sussex local authorities were expecting a decision on reorganisation in our area by the end of March. The government has not yet made a decision on which unitary solution to apply in Sussex and instead have confirmed they will be running a second consultation on plans covering the whole of Sussex.**

The new consultation will see two variations on the proposals already submitted by Sussex local authorities. The first proposed modification is moving Chichester District Council into a unitary with Crawley Borough Council, Horsham District Council and Mid Sussex District Council. Leaving a second unitary in West Sussex comprising Arun District Council, Adur District Council and Worthing Borough Council.

This new consultation will begin after the local elections in May, and a decision is expected in the summer after the consultation period closes, and new representations are considered. Your input into this consultation will help ensure that the implications for the communities you serve are fully considered by government. The overall timescale for reorganisation remains the same with elections to the new shadow unitary authorities expected in 2027 preparing for the new authorities to formally launch in 2028.

All councils in West Sussex remain committed to working together in the best interests of our communities, and we will continue to collaborate closely as we await further clarity from Government.

You can find the latest news and updates on our hub...

**shapingwestsussex.org**

### West Dean Gardens Kitchen Grand Opening: 1st May

Refurbished dining space, expanded kitchen and beautiful new seating area. Check out the transformation!

**tinyurl.com/275p4bv**

# The Valley Parish

[www.facebook.com/ValleyParish](http://www.facebook.com/ValleyParish)

Find out more about our services and events at the A church near  
you website



## Sunday 24<sup>th</sup> May

11am at West Dean

Join us for bible stories,  
songs and games.

(oh and of course cakes and biscuits)

## Contacts

### Parish Priest

**Rev Sarah Manouch**

[priestvalleyparish@gmail.com](mailto:priestvalleyparish@gmail.com) / 07468 854864

(Principal working days are Friday, Saturday and Sunday. Not available on Thursday)

### Churchwardens

**John Holt** - 07787 567140 /

[john@drokefarm.co.uk](mailto:john@drokefarm.co.uk)

**Sarah John** - 07769 887546 /

[sarance@btinternet.com](mailto:sarance@btinternet.com)

### PCC Treasurer

**Lance John** - [treasurer.valleyparish@outlook.com](mailto:treasurer.valleyparish@outlook.com)

### PCC Secretary

**Susie Holmes**

[pccsecretaryvalleyparish@gmail.com](mailto:pccsecretaryvalleyparish@gmail.com)

## Services and Events

3 <sup>rd</sup> May	10am	Holy Communion With Choir East Dean
10 <sup>th</sup> May	10am	Holy Communion Singleton
17 <sup>th</sup> May Ascension Sunday	10am	Holy Communion West Dean
24 <sup>th</sup> May Pentecost	10am	Holy Communion West Dean
	11am	Children's Church West Dean
27 <sup>th</sup> May	7pm	Annual Parochial Church Meeting West Dean
31 <sup>st</sup> May Trinity Sunday	10am	BCP Holy Communion Singleton

This month sees the end of Easter and the beginning of Ordinary Time as we celebrate both Ascension and Pentecost. The Ascension, Jesus' return to the Father, redefined discipleship: instead of clinging to Jesus' physical presence, we are invited into trust, obedience, and the hope and promise that the Resurrection brings. Pentecost, the descent of the Holy Spirit, is God empowering ordinary people to continue Jesus' mission and work on earth. Together, Ascension and Pentecost reveal a rhythm of faith — release and renewal, waiting and empowerment. They remind us that God's work continues through us, sustained not by human strength but by the Spirit who still moves, guides, and inspires.

# The Diary

Here's a quick overview of what's actually going on, in and around the villages of the Lavant Valley in the coming months. Do please let us know if we've missed anything and we'll add it next time for the benefit of all.

## thevalleydiary.org

### May 2026

**Fri 1st** West Dean Gardens Kitchen Grand Opening  
**Fri 1st - Mon 4th** ROSA Botanical Art Fair: West Dean Gardens  
**Fri 1st & Sat 2nd** Goodwood Horseracing  
**Sat 2nd - Mon 4th** Charcoal Burn Weekend: Weald & Downland Museum  
**Mon 4th** Singleton Cricket Club Duck Race: 10.30am (Race start 12.30pm)  
**Sat 9th & Sun 10th** Try a Trade: Weald & Downland Museum  
**Mon 11th** Singleton Community Cafe Special Edition: 2pm - 4pm: Singleton Village Hall  
**Tue 12th** Ladies Night at The Star & Garter at 7pm  
**Sat 16th** Sussex Yeomary Spring Service: Waymark Memorial, Charton: 11.30am  
**Sat 16th & Sun 17th** Goodwoof!  
**Thu 21st** Singleton & East Dean WI: Handbags to Handcuffs: Sheila Willis: East Dean Village Hall  
**Fri 22nd & Sat 23rd** Goodwood Horseracing  
**Sat 23rd - Mon 25th** East Dean Art Fair: East Dean Village Hall  
**Sat 23rd - Mon 25th** Victorian Showtime: Weald & Downland Museum  
**Sat 23rd - Sun 31st** May Half Term: Saxon Life: Weald & Downland Museum  
**Mon 25th** The Valley Diary Copy Deadline: 12noon

### June 2026

**Wed 3rd** Singleton and Charlton Parish Council Meeting and AGM, 7pm (Drinks/ Nibbles at 6.30pm), Singleton Cricket Club  
**Fri 5th** Goodwood's Three Friday Nights  
**Sun 7th** Goodwood Horseracing

**Mon 8th** Singleton Community Cafe: 10.30am - 12noon: Singleton Village Hall  
**Fri 12th** Goodwood's Three Friday Nights  
**Sat 13th** Singlefest: Singleton School: 12noon - 3pm  
**Sat 13th** East Dean Fete, The Old Vicarage: 2.30pm  
**Sat 13th & Sun 14th** Midsummer Fayre: Weald & Downland Museum  
**Thu 18th** Singleton & East Dean WI: Cross-Dressed to Kill: Vivienne Morgan: East Dean Village Hall  
**Fri 19th - Sun 21st** West's Wood Fair, East Dean  
**Fri 19th** Goodwood's Three Friday Nights

### July 2026

**Tue 7th** Selsey Shantymen at East Dean Village Hall  
**Thu 9th - Sun 12th** Goodwood's Festival of Speed  
**Mon 13th** Singleton Community Cafe: 10.30am - 12noon: Singleton Village Hall  
**Wed 15th** Singleton and Charlton Parish Council Meeting, 7pm, Singleton Village Hall

## Got something to add to the Diary?

*Please let us know...*

*Lots more dates and events can be found in the Diary Online at...*

[thevalleydiary.org/diary](http://thevalleydiary.org/diary)

Deadline for the...

### June 2026 Edition

All information for to arrive by **12.00hrs (noon)** please on...

**Monday 25th May**

[editor@valleydiary.org](mailto:editor@valleydiary.org)

*Submissions, news, reviews, event information, photos and anything you have to share with your community should arrive **as soon as possible**.*

## The Team

**Ted Salmon, Editor & Accounts**

[editor@valleydiary.org](mailto:editor@valleydiary.org), 07903 017910

**David Mather, Advertising**

[davidmathero@gmail.com](mailto:davidmathero@gmail.com), 01243 774385, 07973 820877

**Tim Weeks, Distribution**

[tim@gramophoneguru.co.uk](mailto:tim@gramophoneguru.co.uk), 07503 282528

## Distribution Team

Jonathan Rogers, Wendy Heather, Wendy Westwood, Penny Buchan, Judy Fathers, Vicky Gillespie, Gay Godfrey, Carol Corbett, Tony Boxall, Sandra Muggeridge, Patricia Payton, Sheila Sims, Barbara Boxall, Valerie Tapley

**The legal bit:** We (The Valley Diary Team) make every effort to ensure the accuracy of entries & adverts in The Valley Diary (TVD). Content is based on the latest info at the time of printing. This may change. Every effort will be made to circulate info as soon as possible in subsequent editions. This edition will not be reprinted and re-circulated if any details change during its period of validity. In no circumstances can TVD accept any liability for loss and damage which may arise or result from any error in or omission of any entry or advert whether relating to wording space, position, artwork, or telephone number. TVD is not an agent for any business or individual within its pages and is unable to vouch for advertising claims, professional qualifications, trade certifications, membership of trade association or content of web sites whose addresses may be shown in individual entries or adverts published anywhere within its pages. TVD advises readers to satisfy themselves as to the type of goods or services offered or qualifications held by the businesses or individuals appearing in its pages. In short, we're grateful to advertisers for providing funds to keep The Valley Diary going but cannot be held liable in any way by readers if advertisers don't live up to their claims and we won't get involved in any dispute between advertisers in TVD and their customers. Lastly, we don't publish anonymous submissions and contributor articles remain exclusively the views of the author. They are not endorsed by, and don't necessarily reflect the views of, the volunteer editorial team at The Valley Diary.

## Useful Telephone Numbers

CDC Councillor, Henry Potter	07792 857973
East Dean Football Club	07944 036709
East Dean PC Clerk	07710 098512
East Dean Village Hall	07785 740625
Goodwood Security	07909 876823
Lavant Road Doctors Surgery	01243 527264
Lavant Road Pharmacy	01243 380185
Local Police	101
Singleton & East Dean WI	07770 822067
Singleton Fete	01243 818037
Singleton Parish Clerk	07702 240126
Singleton School	01243 811679
Singleton Tearooms	01243 811899
Singleton Village Hall	07711 573276
Weald & Downland Museum: Office	01243 811363
Weald & Downland Museum: Shop	01243 811020
West Dean College	01243 818300
West Dean Gardens	01243 818318
West Dean PC Clerk	07596 884847
West Dean School	01243 811247
West Dean Stores	01243 818222

# Lineage Ads.

**FOOTPATH WARDEN** Clive Jackson, 07740 308125  
**HOME FOOT CARE** 01243 811442.  
**DOG GROOMING - SMART DOGS** Lesley Pollard 01243 811805  
**PILATES CLASSES** Jo, 07917 177404  
**FERNS RESTORATIVE YOGA** 01243 818058  
**STANDBY NANNY** Josie, 07747 867652  
**PAINTER AND DECORATOR** Arthur, 07936 082626  
**YOGA WITH CARA** 07787 512283  
**YOGA WITH KATIE** Tel. Tel 07918 757758  
**REGISTERED NURSE** Dawn, 07876 796034  
**PAINTER** Shaf 07706 105526  
**PLUMBER** Peter 07825 268317  
**DOG GROOMING** Leandra 07944 788727  
**BUILDER** James 07788 532135  
**TAXI** 01243 778499  
**REGIONAL GARDEN TIDYING** Please call 08000 468137  
**MOBILE CAR WASHING SERVICE** Stuart, 07568 377302, stuarteburn@icloud.com  
**SEAMSTRESS** Sewing and alterations. Casual, bridal, prom, suiting & curtains 07391 184605  
**IRONING SERVICE** 01243 531138 or 07773 009241  
**FETCH DOG WALKING** Canine specialist dog Walker, Helen Ferrell, 07765 577290

### Albert says...



I was asked if I had any pets, I said a goldfish is all I've got. And any sporting activities? I said he likes to swim a lot.

## Register of Local...



**Trundlers** Charlton - ask another Helen 01243 811686  
**Hunters Lodge**, Lavant - or indeed another Helen! 01243 532415 - 07788 663712  
**B&B - Ring Sophie** on 01243 811465  
**Harper's Cottage**, East Lavant. Ring Caroline 01243 278659  
**Flint Cottage**, 47 Mid Lavant, Lavant Road, PO18 0AA: Sue Kemble 01243 785883 / 07814903541  
**The Shepherds Barn**, Chilgrove: Lucy 07775 934999  
[www.shepherdsbarnsussex.co.uk](http://www.shepherdsbarnsussex.co.uk)  
**The Blue Bell**, Cocking: 01730 239669  
**Barnfield**, Heyshot, Tessa: 07789 888004



**THE STAR & GARTER**  
 COUNTRY INN WITH ROOMS  
 EAST DEAN

The Star & Garter is a gorgeous country inn, which nestles in the South Downs National Park, at the heart of the Goodwood Estate.

FOR TABLE BOOKINGS AND ROOM RESERVATIONS CONTACT:

**01243 811318**

[INFO@THESTARANDGARTER.CO.UK](mailto:INFO@THESTARANDGARTER.CO.UK)  
[WWW.THESTARANDGARTER.CO.UK](http://WWW.THESTARANDGARTER.CO.UK)

[f](#) [t](#) [i](#) #followthestar



## WHAT THE 'L' IS GOING ON

I am a proof reader. From time to time I challenge the writers' spellings believing there has been an error. However, on occasions the writer has been adamant that he was not wrong.

My latest challenge was the word 'pavilion'. The writer insisted it was spelt with two 'l's as in 'pillion', stallion, million - and to him, it just looked wrong with one 'l'. This is where Google came into its own acting as 'referee'. Sure enough pavillion is spelt with two 'l's in many instances and, in fact, the original word comes from the French which does have two 'l's - but my Copilot wants to change this to one 'l' (confusing).

When you start thinking about the English language, it is complex, having evolved over hundreds of years from various foreign invaders. But what is the English language, I ask.

There are local dialects with their own versions, not to mention Welsh and Scottish (Gaelic) with a wholly different language, and Irish. The English language is still being adapted or changed by our latest invaders. Again, we have the question of one 'l' or two. The Americans like 'traveling' while the English like 'Travelling'; canceled/cancelled, marvelous/marvellous.

In general (but not always) the rule which applies is that two 'l's apply if the word is more than one syllable and is followed by a suffix beginning with a vowel - ie, ing, ation, ed, ous, er. Which brings us back to 'pavillion' Got that?

What I like about our language is that we use one word to describe something when other languages require a whole sentence. No wonder our Continental friends talk a lot. **Coral Mather**

### Pollinator Quest: A May Half-Term Adventure at West Dean Gardens: 23rd - 31st May

An interactive trail designed to celebrate the tiny heroes who make our flowers bloom and our gardens thrive. This quest is the perfect way for families and nature lovers of all ages to connect with the outdoors and discover new wonders around every corner. £13.75 (Child £5). 9am - 5pm.

[tinyurl.com/28zr59hv](http://tinyurl.com/28zr59hv)

## A LESS TAXING FUTURE

Peter Roberts from Chichester has been advertising his services as a Tax Advisor in The Valley Diary for well over a decade.

Peter has recently turned the grand old age of 65 and has been considering his working life. He fully intends to continue to service his existing clients but will no longer be looking for new ones, so no longer needs his advert here.

"I really hated doing this to you Ted but one just has to admit when it's time to slow down a little. I just couldn't give up on my existing clients, who have been with me since the start. Also, with **Making Tax Digital** here, I knew it was not for me - way too much stress. Thanks to our UK government for that! I know quite a few other sole trader advisers who are giving up because of it. But great thanks to you and all at The Valley Diary for many good years of advertising" said Peter.

We are really grateful for Peter's support all these years and I'm sure you'll join me in wishing him all the very best for the future.

Now - who knows someone who will fill the gap on the page for us?! Seriously though, if you do, please send them our way and help us to get the printing bills paid as we go forward. Thanks

[editor@valleydiary.org](mailto:editor@valleydiary.org)

### BRANDY HOLE COPSE WORKING PARTY

Tuesday 12 May 10am - 12noon. Please call 07788 140698 or email [fobhc@treesinchi](mailto:fobhc@treesinchi) for more.

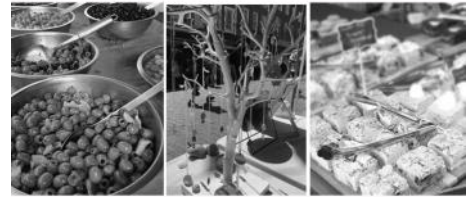
### The MULBERRIES present...

**Saturday 16 May The Polytones** (a 60's tribute band) at Pagham Village Hall, Pagham at 7.30pm. Tickets in advance £9: 07833 971620 or 01243 306655: Bring your own food and drink: Wheelchair access: Proceeds to local charities.

**Maria Wildman**  
01243 306655  
[thewildthings2@outlook.com](mailto:thewildthings2@outlook.com)



Chichester city centre 9am - 2pm  
1st & 3rd Friday of every month



[www.chichester.gov.uk/farmersmarket](http://www.chichester.gov.uk/farmersmarket)

## INSIDE STOREY

*Bespoke Curtains, Blinds*

*Soft Furnishings*

*Poles & Tracks supplied and fitted*

*Practical advice offered*

*Personal, prompt service*

**Sally Rieder**

07866 216160

[sally@rieder.co.uk](mailto:sally@rieder.co.uk)

[www.inside-storey.co.uk](http://www.inside-storey.co.uk)

**Reynolds**  
Our family caring for yours

Funeral Service • Memorial Masons

For more information please contact  
James or Stephen Reynolds:

43 Spitalfield Lane  
Chichester PO19 6SG  
Tel: 01243 773311

27 - 31 High Street  
Bognor Regis PO21 1RR  
Tel: 01243 864745

[www.reynoldsfunerals.co.uk](http://www.reynoldsfunerals.co.uk)

## LILIANES FAMOUS JEWELLERY STALL

WANTED FOR SINGLETON FETE

**COSTUME JEWELLERY**  
**ALL FASHION**  
**ACCESSORIES**  
**HATS, GLOVES ETC.**

WILL GLADLY COLLECT

**CALL LILIANE**  
**01243 811368**

# CENTENARIAN WALKS FOR CHARITY

Anthony Gillings from Worthing is planning a 'century walk' of the two miles from Lancing Green to the Ardington Hotel in Worthing on Saturday 23rd May, his 100th birthday, to help raise funds for 4Sight Vision Support (4SVS).

4SVS is a registered charity which supports those living with sight loss across West Sussex, and assisted his beloved partner Peggy in her final years.

Joining the walk will be Tim Loughton, former Conservative MP for East Worthing & Shoreham, who accompanied Anthony on a fundraising walk three years ago which raised £2,500 for 4SVS.

A local Town Crier will officially start the walk which will feature three generations of Anthony's family - his daughter, son, granddaughter and great-grandson. There will be about 30 walkers in total, and Anthony and family will be celebrating with Afternoon Tea at the Hotel on arrival.

Anthony comments, "Peggy lived with dementia for many years, as well as losing her sight. It felt like a double blow. I am so grateful to anyone who supports this walk, however small their contribution - 4Sight Vision Support provides such an amazing service and it is so important they have the necessary funding to be able to continue to do so."

You can donate at [tinyurl.com/2ylwa8gr](http://tinyurl.com/2ylwa8gr) or by contacting 4Sight Vision Support on 01243 838001 or email [fundraising@4sight.org.uk](mailto:fundraising@4sight.org.uk)

**[4sight.org.uk](http://4sight.org.uk)**



## Petworth House & Park [nationaltrust.org.uk/Petworth](http://nationaltrust.org.uk/Petworth)

### Expressions in Blue: Monumental Porcelain by Felicity Aylieff 23rd May - 27th September

Towering sculptures by renowned ceramicist Felicity Aylieff are being exhibited for the first time at Petworth House and Park. The exhibition takes place across the whole property, including installations throughout the house, film and photographs revealing the remarkable 'making' process in the exhibition room, and two soaring obelisks standing between the house and the Upper Pond. Free with admission, no booking required.

**Little Antlers**  
**Weds 6th May, Weds 2nd June & Weds 1st July, 10.30-11.30am**  
Join us for some free, hands-on fun, suitable for children aged 2 to 4. Activities include storytelling, make and take crafts, and occasionally take place outdoors, so come prepared! Children must be accompanied by an adult at all times.

## THE BOOK SHED

### Singleton Village Hall

Access is through the side gate and is the first shed on the right.

The books are free for you to keep or return.

If you have any books you wish to donate please place them on the shelves.



## TRADITIONAL TIMBER WINDOWS

Bespoke,  
hand crafted  
windows  
made here in  
the Valley



**07881 940057**

[valleytraditionalwindows@gmail.com](mailto:valleytraditionalwindows@gmail.com)

## MOBILE POST OFFICE

### THE SELSEY ARMS at WEST DEAN

**MONDAYS: 12.30pm to 2pm**  
**THURSDAYS: 12.30pm to 2pm**

### THE PARTRIDGE INN at SINGLETON

**MONDAYS 2pm to 3.15pm**

Mobile Postmaster, Operating from  
Grayshot, 01428 604401 - 07484 526779



**GOSS MINI SKIPS LTD**  
**[skiphire@live.co.uk](mailto:skiphire@live.co.uk)**



Skips delivered and collected on small lorries to access most properties. Friendly and reliable local drivers.



If you require help or advice on you waste needs or requirements call Godfrey on the number's below he will be happy to help.

Local family run waste transfer station, based in Duncton.  
Mini & Midi skips available, prices on request.

Call us – tel 01730 817750 – mob 07979 820932



**DYSON KING**  
ARCHITECTURAL  
IRONMONGERS

25 Years Supplying Fittings  
for Doors, Windows, Gates,  
Locks & Safes.

Service to Architects, Builders  
& The General Public

**01243 776739**

[www.dysonking.com](http://www.dysonking.com)

# EAST DEAN FETE

Saturday 13th June  
2.30pm

The Old Vicarage, East Dean

**This year's Fete is soon approaching so get ready to have a fun day in the sunshine!**

As an organising Committee we feel it is important to support all our village and community assets and to recognise that the Village Hall plays a vital role in the running of the Fete. We use all the tables from the Hall as well as mugs and urns and as such the Village Hall cannot be made available for hire on the day of the fete. In past years, until last year when the Hall stepped in to host the fete there has been no donation to the Village Hall funds for this service and we feel this is long overdue.

As always, **we welcome donations** of gifts, bottles, pre-loved good condition, sellable, household items, books and clothes. All good quality contributions will be very much appreciated.

The **tombola** is always a great attraction and has some excellent quality bottles and jars to be won. Please donate what you are able and then come and buy a ticket to win something in return. There will be a **plant stall** to top up your vegetable patch and flower beds. The **home produce stall** sells out quickly and always has delicious homemade cakes, biscuits, jams and preserves. If the sun is shining the **coconut shy** can make a return and we hope to introduce some new and fun fete games and attractions. The **classic cars** are set to return with a competition and Farmer John and Esther will be running farm corner with a variety of **tame farm animals to pet** and **farm machinery** to view. A mini farm visit. The **Pimms stall** has been a huge success in recent years so come and buy a jug, settle down on a bench in the sun and watch the fete in action. If you don't fancy a tippie then **tea and homemade cakes** from the kitchen is delicious. Hopefully the sun will shine and the **swimming pool** will be full of laughing, happy children.

**Contact Sam 07887 562473  
or Susie 07825 336689 for  
more information!**

**Reminder for East Dean Residents**  
Our house-to-house collection will be  
Wednesday 27th May (early evening)



## Moonlight Walk 2026

**Time's running out to get your tickets to the Moonlight Walk!**

On **Saturday 13th June**, St Wilfrid's Hospice are inviting the local community to a magical night. The Moonlight Walk takes you and hundreds of others on a 5 or 10-mile walk around Chichester, exploring familiar landmarks in a way exclusive to the Moonlight Walk. This is a great event to take part in with friends and family and by joining in and fundraising, you'll be supporting the expert care the Hospice provides to local lives in need.

Tickets are available until June 8th, so don't delay! [stwh.co.uk/moonlight](http://stwh.co.uk/moonlight)

## Sahara Trek 2027

**Ever wanted to explore the Sahara Desert?**

St Wilfrid's Hospice are excited to be offering a bespoke adventure across the iconic Sahara Desert in October 2027. This incredible experience will take you on a 6-day adventure, experiencing the amazing desert landscape and sleeping under the star-filled sky.

This trek is more than just a challenge though. By taking part and fundraising, you will also be helping raise vital funds for the expert palliative and end-of-life care that the Hospice provides across your local community. Find out more at [stwh.co.uk/sahara-trek](http://stwh.co.uk/sahara-trek)



## ROSA Botanical Art Fair 1st - 4th May West Dean Gardens

ROSA Botanical Art Fair is fast approaching, and tickets are selling quickly! A must-attend festival of flora, art, and design. To make your visit even more memorable, why not enhance your day by booking one of our exclusive add-on experiences? You can go behind the scenes with expert-led House tours and Garden tours or get hands-on in Creative Taster Sessions, where you can try your hand at everything from botanical screen printing to textile collage. £13.75. Open 10am - 5pm.

A range of delicious lunches and refreshments will also be available from the onsite restaurant. Traditional Afternoon Teas. Fully licensed bars.

[tinyurl.com/2b382hgq](http://tinyurl.com/2b382hgq)

**Berry-Middleton Ltd**  
Specialists in Flintwork for over 20 years  
Stonework-Brickwork-Roofing-Hard Landscaping  
Maintaining the very best tradition in Sussex  
[www.berry-middleton.co.uk](http://www.berry-middleton.co.uk) Tel: 07771 512012  
Email: [mark@berry-middleton.co.uk](mailto:mark@berry-middleton.co.uk)

## L. WEST & SON CARPENTRY & JOINERY SPECIALISTS



We deal with all aspects of carpentry & joinery, including bespoke windows, doors, staircases, cabinets & more. Please get in touch to discuss your requirements.

*New Barn, Newhouse Lane, East Dean, Nr. Chichester, PO18 0NJ*

Tel: 01243 811354 E-mail: [sales@lwestandson.co.uk](mailto:sales@lwestandson.co.uk)

Website: [www.lwestandson.co.uk](http://www.lwestandson.co.uk)

**CHICHESTER BID LAUNCHES CHICHESTER  
IN BLOOM TO CELEBRATE 30 YEARS OF THE  
FESTIVAL OF FLOWERS**

**Chichester BID is bringing the city into full bloom this June, launching a new city-wide initiative to celebrate the 30th anniversary of the renowned Festival of Flowers at Chichester Cathedral.**

For the first time, Chichester in Bloom will extend the spirit of the much-loved festival beyond the Cathedral walls and into the city centre, with businesses transforming their shopfronts into a trail of floral creativity.

Timed to coincide with the Festival of Flowers on 3rd - 6th June, which draws tens of thousands of visitors to the area, Chichester in Bloom will see more than 15 city centre businesses invest in bespoke floral installations, created in collaboration with the city's independent florists, Flower and Hedge Rose. The displays will launch on the opening day of the festival, creating a striking and cohesive visual experience across the city's streets.

Visitors are invited to step beyond the Cathedral and explore the trail of floral moments, discovering imaginative shopfront displays at every turn - from elegant window installations and artistic interpretations to creative designs that bring colour, scent and personality into the streets.

Participating businesses range from galleries, cafés and salons to independent retailers across the city. These include Pallant House Gallery, Waterstones, Q Hair & Beauty, Winter's Moon, Gold Arts, Dartagnan, The Jewellery and Watch Company, Hannah Prior, Ebony, The Bazaar, Brasserie Blanc, Elizabeth Miles and Chichester Festival Theatre as well as

Flower and Hedge Rose - each offering their own interpretation of the floral theme.

Alongside the trail, a number of businesses including The Ivy Chichester, Brasserie Blanc and Fernleigh will also be offering floral-inspired menus, themed dishes and drinks, and creative workshops, giving visitors even more ways to experience Chichester in Bloom - from relaxed brunches and afternoon teas to hands-on activities and evening dining.

To help visitors make the most of their experience, Chichester BID is creating a dedicated Chichester in Bloom webpage, where a downloadable trail map will bring together all participating locations, alongside ideas for where to eat, drink and spend time throughout the week.

Set against Chichester's pedestrianised streets, rich history and distinctive independent businesses, Chichester in Bloom offers an added reason to linger longer - encouraging visitors to make a day, or even a long weekend, of their visit.

Further details, including the full list of participating businesses and a downloadable trail map, will be available soon at [ChichesterBID.co.uk](http://ChichesterBID.co.uk)



**SouthDowns  
GARDENS**

**Garden Design,  
Construction & Maintenance**

01730 642 274  
hello@southdownsgardens.co.uk  
[www.southdownsgardens.co.uk](http://www.southdownsgardens.co.uk)

**Kingley Vale Lime and Flint**

Suppliers of lime, flint and  
specialist building materials

[www.kingleyvallimeandflint.co.uk](http://www.kingleyvallimeandflint.co.uk)  
info@kingleyvallimeandflint.co.uk

01243 767828/07557 515314

**BRUSHWOOD  
TREE SERVICES**

**Dismantling & Felling  
Crown Thinning & Reducing  
Removal of Deadwood  
Pruning  
Hedge Cutting  
Stump Grinding**

*Full public liability - Certified Arborist  
Free Estimates and Advice*

**City & Guilds  
NPTC**

[brushwoodtreeservices@gmail.com](mailto:brushwoodtreeservices@gmail.com)  
**07763 844422**

**A.S.M. Carpentry  
& Joinery Ltd**

Over 35 years of experience in all  
aspects of carpentry  
Professional, Qualified, Insured

**Local and Reliable  
Carpentry Company**

[andrew@asm-carpentry.com](mailto:andrew@asm-carpentry.com)

**Phone: 01243 278659  
Mobile: 07789 748368**

**Call My Bluff at East Dean Village Hall...**

**Would you know whether a ‘Cromlech’ was a mythical monster (or ogre); a prehistoric monument consisting of an undressed standing stone; or a medieval singalong, in the market square, with a band of strolling minstrels?**

If you already know (without looking it up) that it’s a prehistoric standing stone then good for you, you’re cleverer than East Dean’s team were on **Saturday 18th April**, when their bluffs were called by a very convincing display of fibbing from Boxgrove. It was the attention to detail that did it: the “monster (or ogre)” sounding so like it was a quote from a dictionary, the historical setting of the singalong “in the market square”. And by the way, an undressed stone is one that hasn’t been knapped or carved, not one that someone’s pulled the frock off!

East Dean got their own back with ‘Scamander’, which could quite plausibly have been a bee larva, laid by the queen in each tiny hexagonal cell of a hive; or the pile of ashes raked out of a smithy by the blacksmith and much sought after by gardeners to earth up their early potatoes. Except it’s neither of those things; to scamander is to walk unsteadily or with a shuffling gait, so remember that one next time you see a friend who’s clearly been in the pub for a while. As he lurches towards you in an unsteady way he is scamandered, and you may want to buy him a coffee. Just don’t take financial advice from him at that moment. Or ever, probably.

Each side presented six words with one true and two false definitions and the whole show was chaired very well by the Reverend Sarah Manouche in the role made famous by Robert Robinson (but without his comb-over). One innovation that they didn’t have in the TV version was that every member of the audience had a green and red card and when Sarah summarised what each of the contestants had said, the people could vote for which definition sounded most likely to them. This revealed an interesting thing: the majority of the audience were right on the majority of all 12 words. So if it proved nothing else the evening did make the case for the wisdom of the crowd - worth bearing in mind when politicians talk about limiting trial by jury to save money.

In the end East Dean scored eight points to Boxgrove’s four, but it was never really about the winning, it was the taking part that mattered, and having some fun! And frankly, the more ways we can come up with to have fun at the moment (that don’t cost much to do) the better! **Tim Weeks**



**ROGER GUNN**

**Garden Machinery  
Sales & Service Specialist**  
Showroom & Workshop  
Located at Binderton Nr Lavant  
**Main dealers for many makes**  
**Fast reliable service**  
**Advice & Discounted machines**  
**Part exchange taken**  
**Collection & delivery offered**

See website  
[www.rogergunn.co.uk](http://www.rogergunn.co.uk)  
**01243 786003**



**East Dean  
VILLAGE HALL**

[www.eastdeanhall.co.uk](http://www.eastdeanhall.co.uk)

*Ideal for celebrations, fitness classes, meetings, parties and wedding receptions. Can accommodate 80 standing/60 seated. Fully equipped professional kitchen, outside grass area with stunning views, car park for up to 15 cars. Disabled access.*



**DEFIBRILLATORS**

You will find these defibrillators locally at **Singleton Village Hall** (PO18 0HA), the **Phone Box at Charlton** (Foxhall Lane, PO18 0HX), **behind East Dean Village Hall** (PO18 0JG) and on the front of **West Dean Stores**.



Once activated, the device will talk you through how to use it. A defibrillator gives a high energy shock to the heart of anyone who’s in cardiac arrest.

**The Sussex  
Yeomanry  
Association  
Spring  
Service**



**Saturday 16th May**  
**Waymark Memorial in  
Charlton, starting at  
11.30am**

Coffee will be available at the Fox Goes Free Pub from 10.45am should you wish to partake.  
All are most welcome to attend.

**SIMON PATERSON**

*Furniture Restoration*

Over 25 years experience  West Dean College Distinction

For confident restoration of antique furniture, clocks boule and marquetry  
Phone Simon on:  
**01243 811900**



## East Dean Art Fair Spring Bank Holiday: A Chance For All To Shine!

The Chichester Art Trail has been a popular event in the local calendar for several years, giving people the chance to visit artists in their own homes and studios, view their work and possibly buy some pieces.

This works very well for artists who have houses large enough for visitors to circulate through them or completely separate studios, but there are a lot of creatives who don't come into those categories. Perhaps they don't have a large enough portfolio of work to hold an exhibition, maybe they don't have the confidence to feel they can put themselves forward like that. Or perhaps they just don't want lots of strangers walking around their house, for fear that their interest might not be entirely aesthetic!

Either way, there are a lot of very creative people in this area who have had little opportunity to show their work to anyone other than friends or family. With that in mind we have decided to turn **East Dean Village Hall** into an art gallery for the **Spring Bank Holiday, 23rd-25th of May**. All artists living in or near The Valley Diary distribution area (Cocking – Boxgrove – Lavant) are invited to submit three or four paintings, ceramics, sculptures or craftworks for display and possible sale over that weekend. All you need to do to take part is to **email us at [eastdeanhall@gmail.com](mailto:eastdeanhall@gmail.com) before Sunday 10th May** with a description of what type of work you've made (e.g. painting, pot, sculpture) and its size, so we can plan in advance how we're going to display them all.

We've never done this before, so in that sense it will be an artwork in itself! But on the purely practical level, if anyone knows where we can borrow a number of large free-standing display boards from please contact us, either on the above email or call **07503 282528**. Ars gratia artis! **Tim Weeks**



## Securing in a Property in a Competitive Spring Market

Spring 2026 is proving to be a busy and competitive time for buyers in and around Chichester. As gardens bloom and homes show at their best, more buyers are actively searching, keen to secure the right property before summer.

One of the most encouraging trends for buyers this spring is that vendors are becoming more realistic about pricing and expectations. This shift has created genuine opportunities, and it's reflected in the high levels of interest many properties are now attracting. Homes that are well priced and presented, particularly near Chichester Harbour and in the sought-after villages in the South Downs National Park, are seeing strong competition from multiple interested buyers as this area maintains strong interest whatever the market when properties become available.

For buyers, preparation is key: having finances in place, knowing priorities, and acting quickly can make all the difference. With vendors realistic and buyers keen, this spring market is both competitive and full of opportunity.

**Jennie Hancock, [propertyacquisitions.co.uk](http://propertyacquisitions.co.uk)**



## INSPIRATIONAL NATIONAL GARDEN SCHEME WEST SUSSEX GARDENS OPENING IN MAY

May is a time of hope when everything feels new and full of energy. Whilst there's still lots to do in the garden this month, make sure to take a step back and admire all you have achieved so far this year. And don't forget to spend some time visiting some National Garden Scheme gardens. There are plenty of lovely gardens on offer, providing inspirational ideas for planting, friendly advice and of course our now famous tea and cake! Here's our nearest ones, but there are plenty more...

**Hammerwood House** Iping, Midhurst, GU29 0PF Opens Sun 10th May (1pm-5pm). Adm £7, chd free.

**4 Hillside Cottages** Downs Road, West Stoke, Chichester, PO18 9BL Opens Sun 24th May, Sun 7th June, Sun 19th July, Sun 16th Aug (2pm-5pm). Adm £5, chd free.

**1 Pest Cottage** Carron Lane, Midhurst, GU29 9LF Opens Fri 29th May (2pm-5pm); Sun 31st May (1pm-5pm). Adm £5, chd free.

*The National Garden Scheme's core beneficiaries include Carers Trust, Macmillan Cancer Support, Marie Curie, Hospice UK, Parkinson's UK and The Queen's Institute of Community Nursing. [galleries.co.uk/NGS/sussex26](http://galleries.co.uk/NGS/sussex26)*

Rother Valley Croquet Club

## HAVE FUN IN THE SUN THIS SUMMER

**Gentle competition, a little very light exercise and the opportunity to make new friends, all in a beautiful rural setting? Croquet may be what you're looking for!**

Rother Valley Croquet Club, based in Duncton, just south of Petworth is looking to welcome new members for the 2026/27 season. Croquet is a game for all ages, all sizes and all skill levels. At the basic level it's exceedingly simple (the first to seven points wins the game). But then the fun begins as your opponent spoils all your best laid plans! What seemed so simple, now becomes a lot more challenging! The club runs regular competitions as well as matches against other local clubs and plenty of social events. People join the club in ones or twos or more - you'll soon make friends and have plenty of people to play with.

We're running a **free taster session on Saturday 9th May from 10.30am - 1pm**. We've got all the kit you'll need plus there's free parking, tea, coffee and probably cake! Just bring your flat-soled shoes and a big smile! Hope to see you then! For directions and more information about all this, have a look at our website...

**[rothervalleycroquet.co.uk](http://rothervalleycroquet.co.uk)**



## EXTRA COVER CRICKET COACHING

**Teaching children the fundamental life skills whilst having fun and building friendships that can last a lifetime**

**Francis Ward** ECB Level 2 coach, ECB CA gives...

### One to One Coaching Group Sessions (up to 11 players or full squad)

- Currently coaching U12/13 mixed hard ball with Chichester-based club
- First Aid trained
- Full ECB DBS and Safeguarding officer
- Member of the ECB Coaches Association
- Fully insured

**07941 039378**

**[ecc.coaching@btinternet.com](mailto:ecc.coaching@btinternet.com)**



## Specialists in family law. Helping you find the best way forward.

We are a team of specialist family lawyers and mediators providing you with support tailored to your needs. We assist clients with:

- Divorce and Separation
- Family Mediation
- Financial Issues
- Collaborative Law
- Child Arrangements
- Court Representation

01243 769001 | [info@ecfamilylaw.co.uk](mailto:info@ecfamilylaw.co.uk)  
[www.ecfamilylaw.co.uk](http://www.ecfamilylaw.co.uk)



Chilgrove | Chichester | Petersfield



# LN LISLE MEDICAL

## Private GP

Haslemere  
Chichester  
At home

New clinic

- Membership or pay as you go
- Emphasis on face to face care
- All adult and child general practice services
- Appointments usually within 24 hours
- At home or in our clinics
- Full range of investigations, referrals, prescriptions

Tel: **01730 202345**

Email: **[contact@lislemedical.com](mailto:contact@lislemedical.com)**

**[www.lislemedical.com](http://www.lislemedical.com)**

# SINGLETON CRICKET CLUB

## ALL STARS CRICKET

Ages 5-8

**Starts 8th May**

Fridays 5:00pm - 6:00pm

£65 for 8 Weeks (Includes T-shirt & Bag)

• Book now: [ecb.co.uk/play/all-stars](http://ecb.co.uk/play/all-stars)

## DYNAMOS CRICKET

Ages 8-11

**Starts 8th May**

• Fridays 5:30pm - 6:30pm

• Saturdays 9:00am - 10:00am

• £65 for 8 Weeks (Includes T-shirt)

• Book now: [ecb.co.uk/play/dynamos-cricket](http://ecb.co.uk/play/dynamos-cricket)

Call Harry on 07970 489669

**Bar & BBQ every Friday!**

LADIES  
Night

Star and Garter

Tuesday 12th May

7pm, All Welcome!



## Singleton Village Hall

Great for all sorts of events  
Holding 50 seated or 70 standing  
Bridge Clubs, Yoga and Fitness  
Social Events, Children's Parties etc.  
Free Parking, WiFi, Chairs & Tables  
Skittle Alley and  
Fully Equipped Kitchen

Singleton Village Hall could be  
your Perfect Venue!

[SingletonVillageHall.com](http://SingletonVillageHall.com)  
[bookings@SingletonVillageHall.com](mailto:bookings@SingletonVillageHall.com)



## TIM JASPER

KITCHENS, HOME OFFICES,  
BOOKCASES AND MORE

Hand crafted in  
Goodwood since 1981



[www.timjasper.co.uk](http://www.timjasper.co.uk) 01243 774411  
[info@timjasper.co.uk](mailto:info@timjasper.co.uk) | The Valdoe,  
Goodwood, Chichester PO18 0PJ

# Upwaltham Barns Open Gardens

17<sup>th</sup> June  
11am - 4pm

Entry £10.00 per person (Cash Only)  
Entry includes tea/coffee & a slice of cake.

Proceeds divided between St Mary's Church &  
Macmillan Cancer Support

Upwaltham Barns, Upwaltham, GU28 0LX

THE  
PERFECT  
FAMILY GIFT

# A BOOK ABOUT YOU

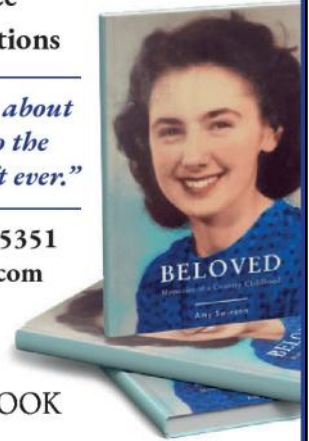


I will turn your unique life story into a beautiful book to share and enjoy with your family and friends.

- Professional biographer
- Friendly, personal service
- Short and long book options

*"Wonderful to have a book about Mum that we can pass on to the grandchildren. The best gift ever."*

Contact Katarina 07982 465351  
katarina@lifestoryinabook.com  
www.lifestoryinabook.com



LIFE STORY  IN A BOOK



Let's make financial  
advice *personal*

Adam Smith

Wealth Management

We recognise that talking about money and finances can be tricky. It's a personal topic. So it's reassuring to know there's someone on hand who can help you address your needs, understand your goals and realise your dreams.

Our friendly and approachable service is backed by the strength and security of a FTSE 100 company, St. James's Place Wealth Management. What's more, being local means we're here to help whenever you need us.



Adam Smith  
Dip CII  
Principal

We can help with all aspects of investment management, retirement planning, inheritance tax planning strategies, and later life care costings.

Get in touch for a chat.

07803 794376  
adam.smith@sjpg.co.uk  
www.adamsmithwm.co.uk

Associate Partner Practice



Adam Smith Wealth Management is an appointed representative of and regulated by the Financial Conduct Authority for the purpose of advising solely on the private wealth management products and services made available to clients by the Group's member firms (as defined in the FCA Handbook). The St. James's Place Partnership and the Adam Smith and Thomas Practice are member firms used to describe St. James's Place Wealth Management.

SJP Approved 25/02/2023

© 2023 St. James's Place

LOVE  
SUPPORT  
HOPE  
CARE

THE SUSSEX  
**Snowdrop**  
Nursing care at home for local children  
with life threatening or terminal illnesses  
TRUST 



ANNUAL  
CHARITY WALK

SUNDAY 10TH MAY

ARUNDEL CASTLE PARK, BN18 9AU

CHOOSE A 1 OR 5KM WALK  
START BETWEEN 1PM AND 3PM

£7.50 Adults/£3 Children (under 5's free)/£3 Dog  
Download your Sponsor Form from our website  
Dog Sponsor Forms also available this year!



BOOK IN ADVANCE HERE  
OR PAY ON THE DAY

TEAS  
REFRESHMENTS  
STALLS

Pushchairs & children  
with scooters can go up to  
2km on a tarmac path

Dogs on leads welcome  
Car parking on site

THESUSSEXSNOWDROPTRUST.COM

Lavant Horticultural Society

# Annual Plant Sale

**Sunday 10<sup>th</sup> May 2026**

2.00 pm – 4.00 pm

**Lavant Memorial Hall**

*Everyone welcome*

*Admission free*

Wide variety of good quality plants: bedding, vegetables, perennials, shrubs

Cash payments only

*Cream teas*

[www.lavanthortsoc.org.uk](http://www.lavanthortsoc.org.uk)



**MERRITT'S of MIDHURST**  
FUNERAL SERVICE LTD.



*The only family owned and run funeral service in Midhurst and the surrounding area*

- Private Family Room -
- Service Chapel -
- Bespoke Funeral Services -
- Traditional and Natural Burials -
- Direct Cremations -
- Pre-Paid Funeral Plans -
- Memorial Masonry -

01730 816245

Rumbolds Hill, Midhurst, GU29 9DG

[enquiries@merrittsofmidhurst.co.uk](mailto:enquiries@merrittsofmidhurst.co.uk)

[www.merrittsofmidhurst.co.uk](http://www.merrittsofmidhurst.co.uk)

*Proudly Serving Our Community*

**MacDonald Oates LLP SOLICITORS**



Residential Property  
Family Law  
Mediation Services  
Wills, Probate & Trusts  
Litigation & Dispute Resolution  
Employment Law  
Company & Commercial  
Commercial Property

**Leading Client Service**

**Petersfield Office**

Tel: 01730 268211 | Fax: 01730 261232

**Midhurst Office**

Tel: 01730 816711 | Fax: 01730 816016



[www.macdonaldoates.co.uk](http://www.macdonaldoates.co.uk)

**L. West & Son**  
**Plumbing & Heating**



BATHROOMS,  
KITCHENS,  
CENTRAL HEATING,  
BOILER REPLACEMENT (GAS/OIL),  
UNDERFLOOR HEATING,  
LEADWORK,  
BOILER SERVICES,  
MAINTENANCE



New Barn, Newhouse Lane, East Dean,  
Chichester, W. Sussex PO18 0NJ

Tel: 01243 811354 or

Email: [sales@lwestandson.co.uk](mailto:sales@lwestandson.co.uk)



# Tod Anstee

todanstee.com

CHICHESTER

01243 523723

chichester@todanstee.com

MIDHURST

01730 774700

midhurst@todanstee.com



## Your next move, made simple.

Contact us to book your free, no-obligation valuation

Residential Sales & Lettings | Country Homes | Land & New Homes | Rural Estates | Commercial

## GOODWOOF!

Saturday 16th and Sunday 17th May

If you're looking for a joyful day out that celebrates our four-legged friends in the most delightful way, look no further than Goodwoof at the Goodwood Estate this May.

Goodwoof is truly a dog's dream day out. With over 50 free activities included in your ticket, there's something for every pup - world-class competitions from top canine athletes; wellness workshops; talks from key behavioural and veterinary experts; free-of-charge activities that you can take part in with your dog; Field & Trail demonstrations plus treats and plenty of play. It's a wonderfully hands-on experience where dogs aren't just welcome - they're the stars of the show.

There's also plenty of magic for humans. Families can wander through a lively, festival atmosphere, discovering everything from the ever-popular Literary Corner, LEGO workshops and the out-of-this-world Barkitecture exhibition, where architects and designers create extraordinary kennels, with a fun "Dogs in Space" theme for 2026. Jellycat fans can also look forward to a charming, immersive experience, with exclusive Goodwoof releases and plenty of cuddly characters to discover - a real highlight for children and collectors alike.

This year, Goodwoof has an especially heartfelt focus as it celebrates rescue dogs. Each morning begins with a moving rescue dog parade, and the event is proud to support Battersea Dogs and Cats Home, helping to raise awareness of the importance of giving every dog a loving home.

Goodwoof is a unique and uplifting weekend that brings together dogs, their humans, and a shared love of companionship, creativity and fun. Whether you have a dog or simply adore them, it's an event guaranteed to leave you smiling [goodwood.com/goodwoof](http://goodwood.com/goodwoof)



Arts, Design and Conservation Courses



westdean.ac.uk

